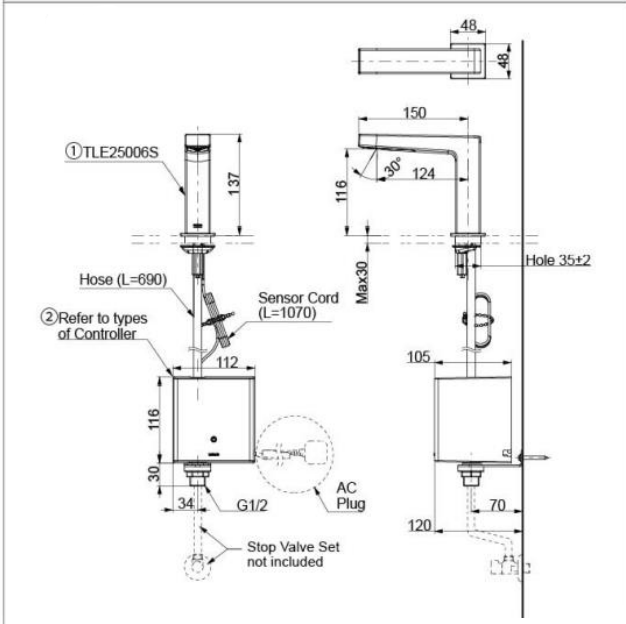


✓✓✓ Excellent



Brand

TOTO

Product Name

TLE25006S / TLE01502A

Description

- AC operated sensor tap
- TLE25006S: Sensor tap (Cold water)
- TLE01502A: AC controller
- ECO CAP Technology adds air to water to provide a full water jet while saving water
- Sensor is strategically placed for accurate detection
- Low maintenance

Colour / Material

Nickel Chrome

Specifications

Power Supply	: AC 220V
Preset Timing	: 60s
Spout Length	: 150 mm
Height	: 137 mm
Water Pressure	: 0.05 MPa ~ 0.75 MPa
Water Usage	: 1.5L/min